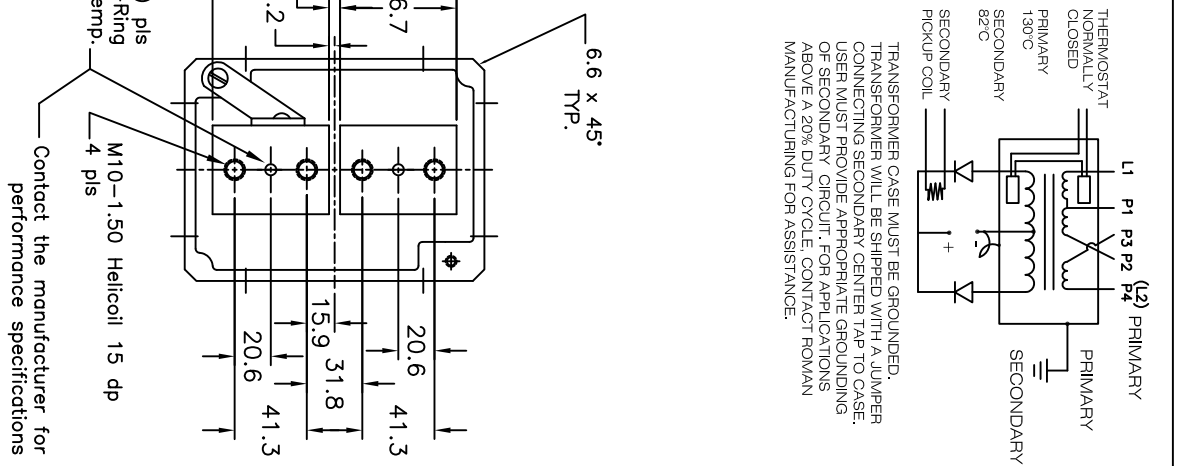
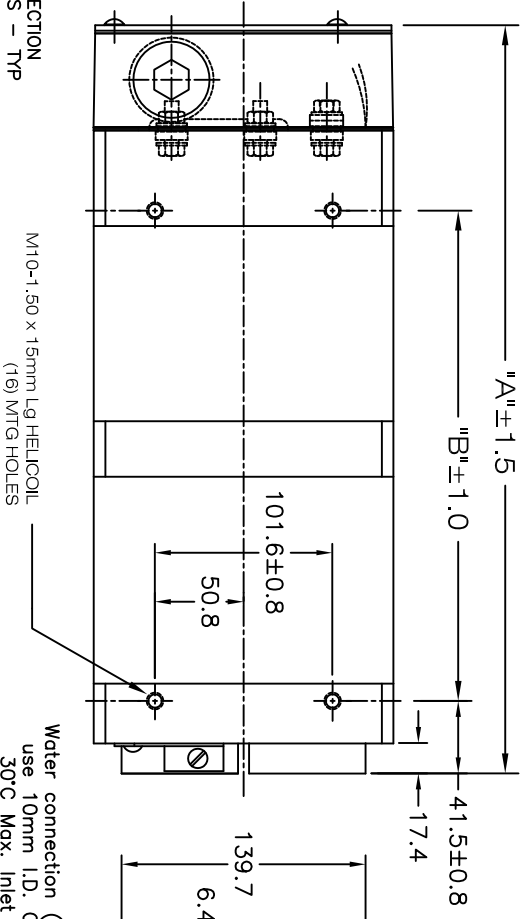
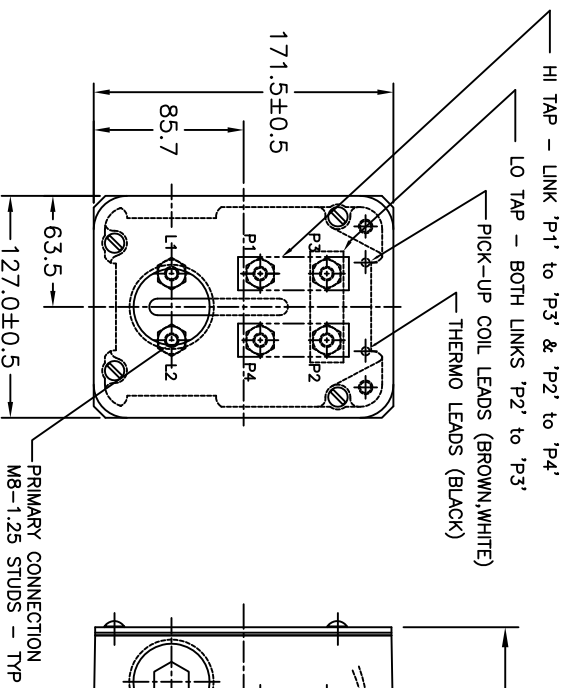
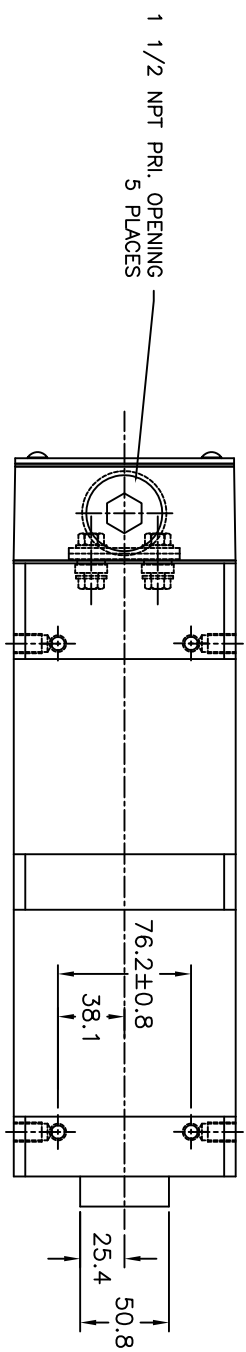


MODEL	CHRYSLER NUMBER	KVA @ 50% DC	PRIMARY VOLT/FREQ	SECONDARY VOLTAGE (DC)	TURNS RATIO	Dim. 'A'	Dim. 'B'	WEIGHT LBS / KG
TDC-5826	-	160	500/1000HZ	9.0 - 13.1	LO-TAP HI-TAP 55:1 38:1	425	279	70 / 32
TDC-6998	91-680-1002	160	650/1000HZ	9.0 - 13.0	72:1 50:1	425	279	70 / 32
TDC-6999	-	160	800/1000HZ	9.0 - 13.1	88:1 61:1	425	279	70 / 32

COOLING REQUIREMENTS: 7.5LPM @ 30°C



NOTE*
The secondary terminals of this device are intended as an electrical connection only. Applications must be designed to minimize any forces applied to the secondary terminals, this can be accomplished by transferring forces to a structural member.

All dimensions in Millimeters

REV	DESCRIPTION	DATE
B	ADDED 500 VOLT VERSION TO CHART TDC-5826	07Feb13
A	ADDED CHRYSLER NUMBER TO CHART	12Nov10

SCALE	NONE	DRWNG BR	BCC
DATE	31MAY07	WEIGHT	

POWER SUPPLY	
SIZE	3"
DRAWING NUMBER	5998-1